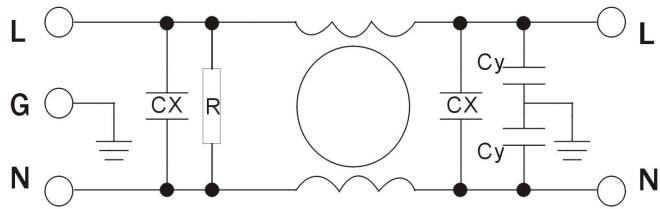


Technical Data

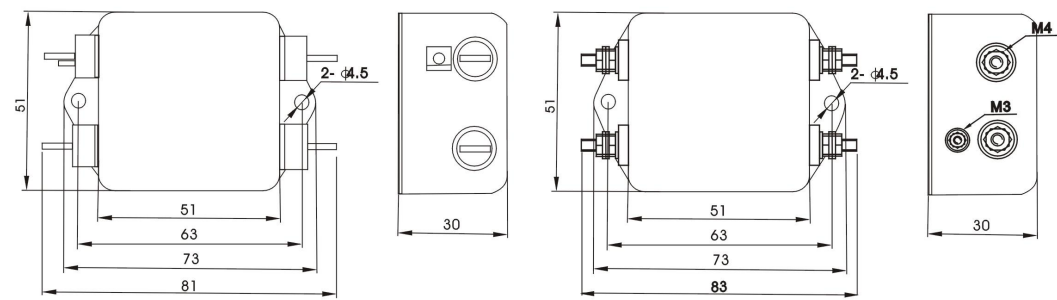
Rated Voltage	115/250VAC
Line Frequency	50/60Hz
	1500VDC (line/line)
Test Voltage	2250VAC (line/ground)
Insulation Resistance	> 500MΩ@500VDC
Temperature Rise	< 30℃
Climatic category	25/085/21

Single phase filter			
DBA3-Series EMI FILTER	Chengdu Mengsheng Electronic CO., LTD		
	Level	quantity in one package	Weight
	Industrial grade	120PCS	17KG

Electrical Schematics



Outline Drawing and Dinensions(mm , ±1mm)

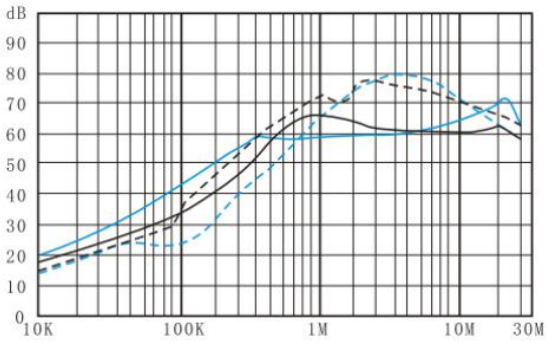


Components Parameters

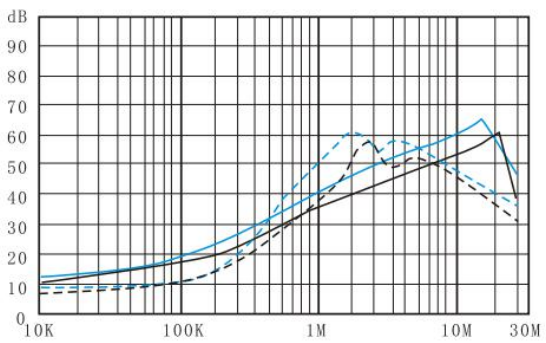
Product model	electric capacity (X2)	electric capacity (Y2)	Inductance (L)	Remark
DBA3-1A	0.22 μ F	2200pF	10mH	Parameters support customization
DBA3-3A	0.22 μ F	2200pF	5.0mH	Parameters support customization
DBA3-6A	0.22 μ F	2200pF	3.5mH	Parameters support customization
DBA3-10A	0.22 μ F	2200pF	0.6mH	Parameters support customization
DBA3-20A	0.22 μ F	2200pF	0.4mH	Parameters support customization

Insertion Loss

———— (Common Mode) - - - - - (Differential Mode)



DBA3-1A / DBA3-3A



DBA3-6A / DBA3-10A